

Developing World Class Leaders

LEADERSHIP CULTURE SURVEY



Company XYZ

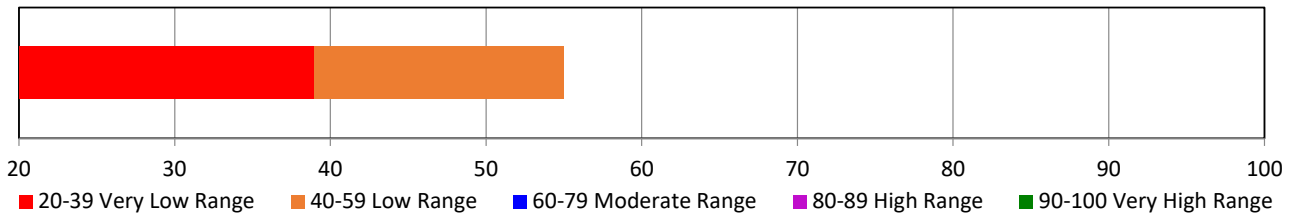
Presented to:
John Doe
January 1, 2019

80 EAST US HWY 6
VALPARAISO, IN 46383

219-477-6378
WWW.THEEG.COM

Overall Leadership Culture Score for Company XYZ

55



Scoring Interpretation

90-100 Very High Range	You scored in the Very High Range suggesting your leadership program and process is above the level needed to produce exceptional results. You should have low turnover in your leadership staff and a successful pipeline & succession plan in place.
80-89 High Range	You scored in the High Range suggesting you have most if not all of the components necessary to develop your leaders. You may have a few short comings or lack some consistency but it would appear many things are headed in the right direction.
60-79 Moderate Range	You scored in the Moderate Range suggesting your leadership program needs a better focus. Look to review the 8 Key Components necessary to build a leadership program.
40-59 Low Range	You scored in the Low Range suggesting you are far behind the curve of having a robust leadership development plan. Evaluate the 10 things that cause leadership programs to fail and see how many of them are lacking in your approach.
20-39 Very Low Range	You scored in the Very Low Range suggesting that you may lose key members of your staff because they don't see a clear path for them and they see the organization as disengaged. This could affect morale and turnover. Evaluate the 10 things that cause leadership programs to fail and begin to address them immediately.

Category Scores for Company XYZ

